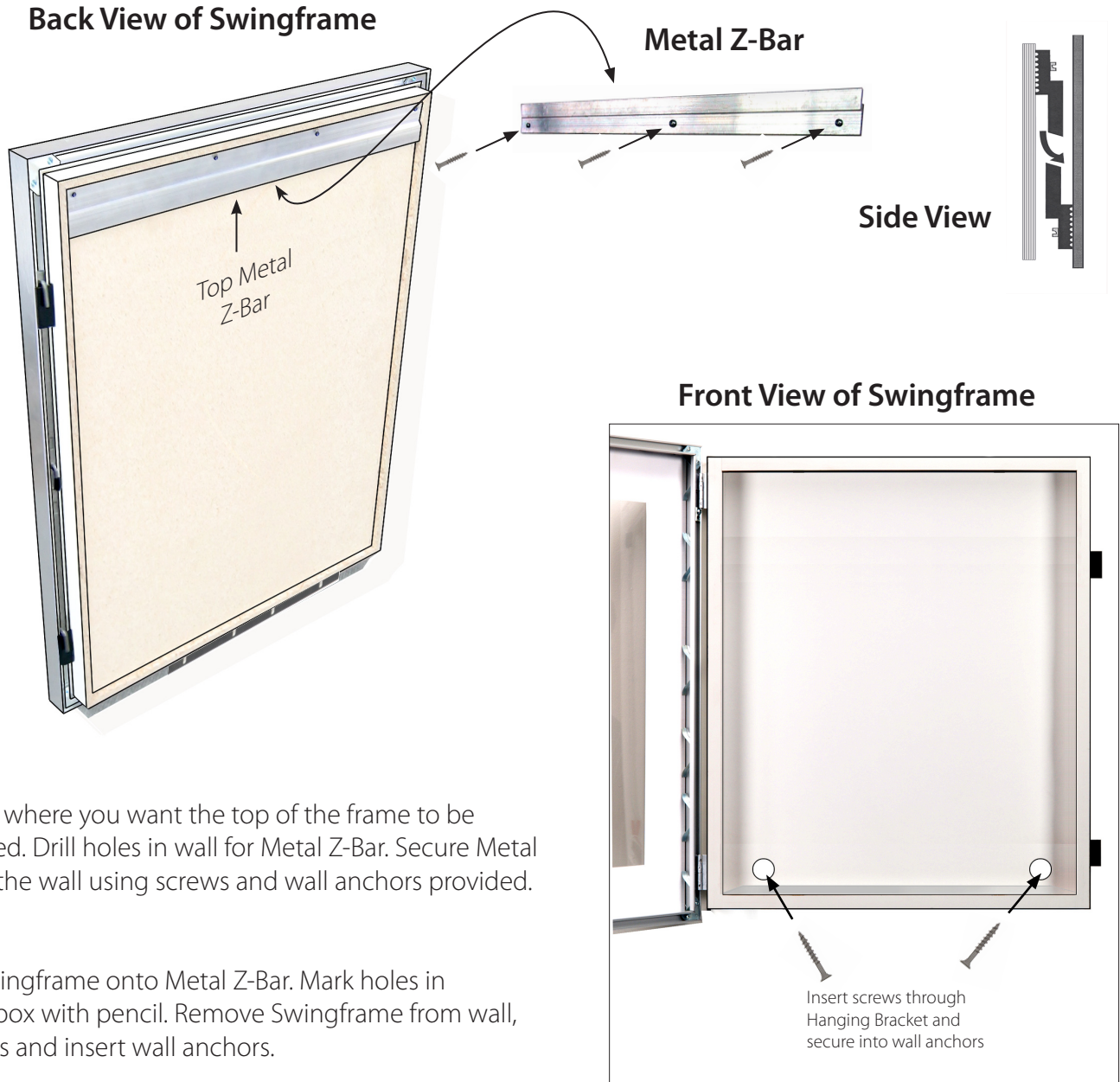


### Swingsnap Wide-Edge T4 Lightbox - 5" Deep (Back-Lit)



#### Step 1

Measure where you want the top of the frame to be positioned. Drill holes in wall for Metal Z-Bar. Secure Metal Z-Bar to the wall using screws and wall anchors provided.

#### Step 2

Place Swingframe onto Metal Z-Bar. Mark holes in Shadowbox with pencil. Remove Swingframe from wall, drill holes and insert wall anchors.

#### Step 3

Replace Swingframe over Metal Z-Bar. Insert screws through the holes and secure into wall anchors with screwdriver.

**Simple hand tools required:** Level, Pencil, Drill, Phillips Head Screwdriver